



COMPADRE® is a non-ionic, non-foaming, and shear tolerant drift control agent containing suspended antifoam/defoamer. Compadre may be used as a drift control adjuvant to enhance deposition, retention and control spray droplet size of agricultural and industrial chemicals.

FEATURES:

- Contains LECI-TECH, a unique technology that assists overall spray performance
- Non-ionic formulation
- Shear-tolerant

GROWER BENEFITS:

- TO: Drift reduction with performance-sized droplets
- ON: Droplet retention by adhesion and spreading
- IN: Increased penetration without cuticle disruption
- Contains an antifoam/defoam system
- Low use rates make COMPADRE cost-effective

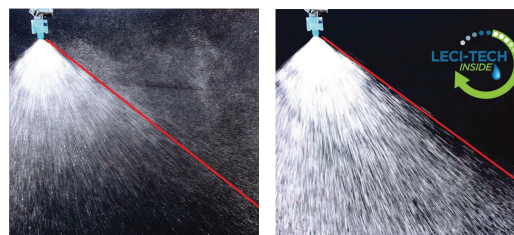
RATES:

1 pt/100 gals of spray solution

TARGET CHEMISTRIES:

Loaded Glyphosate Formulations

Reduce Drift and Reach Your Spray Target with Performance-Size Droplets



ALWAYS READ AND FOLLOW LABEL DIRECTIONS.

© 2018 Loveland Products, Inc. All Rights Reserved. All of the trademarks and service marks displayed are marks of their respective owners. Check State Registration to make sure product is registered in your state. LOVELAND PRODUCTS, INC.® | P.O. BOX 1286 | GREELEY, CO 80632 | www.LovelandProducts.com

Nutrien
Ag Solutions™