

NutriSync®

Nutrition on the Move



Mobilize essential nutrients to areas of peak demand.



Utilize key nutrients at critical growth stages.



Enhance plant metabolism and transport of nutrients.



Increase plant cell integrity.



Increase overall plant growth and vigor.

Improving plant nutrient uptake, transport and utilization

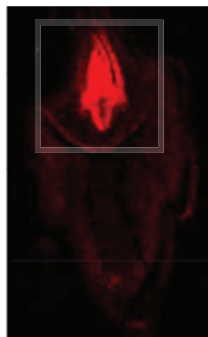
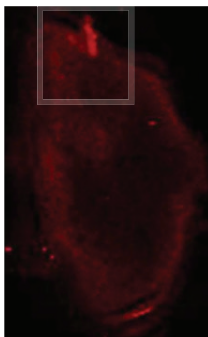
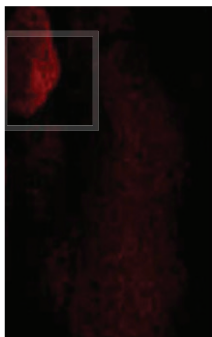
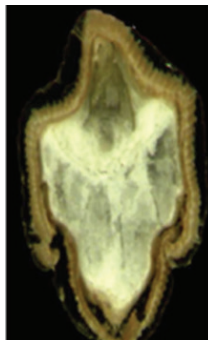
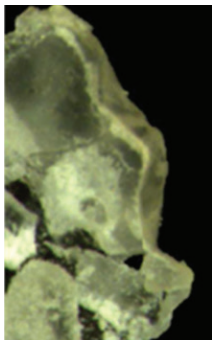
NUTRISYNC and **NUTRISYNC** Foliar Micronutrients prompt crops to move existing and applied nutrients from the roots and older leaves to new growth areas where they are needed most for plant growth and productivity. By remobilizing nutrients within the plant, **NUTRISYNC** Nutrient Transport Technology helps to supply your crop with key nutrients to the areas of highest demand, which can result in healthier plants, faster growth, higher yield potential, and more consistent quality.

How does **NUTRISYNC** Nutrient Transport Technology work in plants?

NUTRISYNC Nutrient Transport Technology is a naturally occurring carbohydrate that supports many of the processes that are central to plant growth and development, including nutrient uptake, storage, transport and use. It also plays a role in cell signalling in the plant, production of the plant cell wall and response to salt stress. **NUTRISYNC** Technology is the reason foliar nutritional tools powered by **NUTRISYNC** consistently perform when other foliar nutrients may fail.



NutriSync Products Performance - Rice Kernel Cross Section



Untreated

Foliar Micronutrient

Foliar Micronutrient
with **NutriSync**

*Higher accumulation of applied nutrient as indicated
by higher concentration of bright red in photos.*

Source: Dr. Patrick Brown, UC Davis, data generated at Stanford National Lab

NutriSync®

NutriSync's® foliar micronutrient product line is backed by a proprietary nutrient transport technology like nothing else on the market.

WITHOUT NutriSync

- ➖ Low-mobility nutrients are stuck in the roots and older leaves.
- ➖ Less efficient nutrient utilization.
- ➖ Possible nutrient deficiencies for newer growth.

Low-mobility nutrients like Boron (B) and Calcium (Ca) are "trapped" in roots and old leaves

WITH NutriSync

- ➕ Nutrients from roots and older leaves are remobilized and used at other key areas.
- ➕ Nutrients are distributed to where they're needed most.
- ➕ Nutrients mobilize quickly and can lead to faster growth, higher yield potential and more consistent quality.

Foliar application of NutriSync product



NutriSync products are formulated for enhanced penetration and absorption through the leaf

Low-mobility nutrients are remobilized to high-demand areas of new growth

Next level nutrition is here.

Most nutrition programs kind of look the same—until they don't. If you take a closer look at NutriSync products, you'll see a proprietary nutrient transport technology like nothing else on the market. NutriSync brand micronutrients contain a naturally occurring carbohydrate that moves nutrients through the vascular tissue to the growing points where they are needed most.

NutriSync® **D**

NutriSync®
Boron

NutriSync®
Calcium

NutriSync®
Essential 

NutriSync®
Copper 

NutriSync®
Magnesium

NutriSync® **M**

NutriSync®
Manganese

NutriSync®
Micro Pak 

NutriSync®
Phos 

NutriSync®
Sulfur

NutriSync®
Zinc



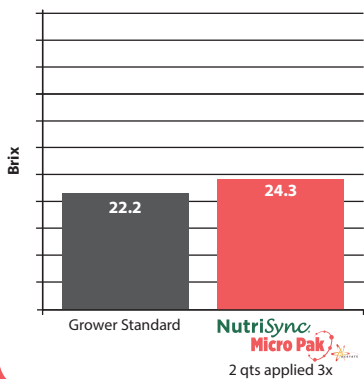
Grower Standard



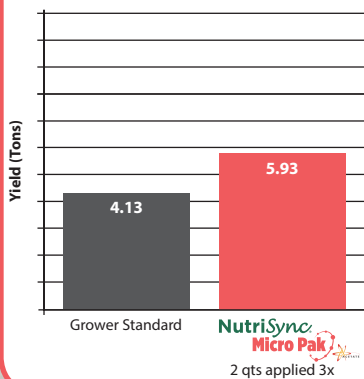
NutriSync Micro Pak 

0.5% v/v

NutriSync MicroPak on Grapes

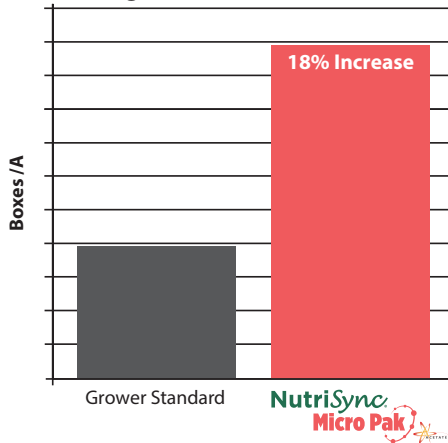


NutriSync MicroPak on Grapes



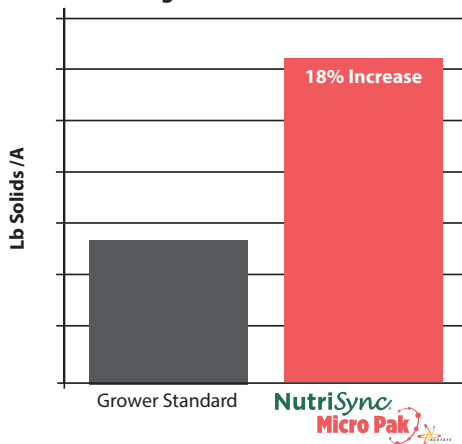
Source: Tech Services 2013

NutriSync MicroPak Orange Trials Average Number of Boxes Per Acre



Source: 2015-16, Winter Haven, FL. Florida Ag Research,
Trial Sponsored by CHBio / CPB1502

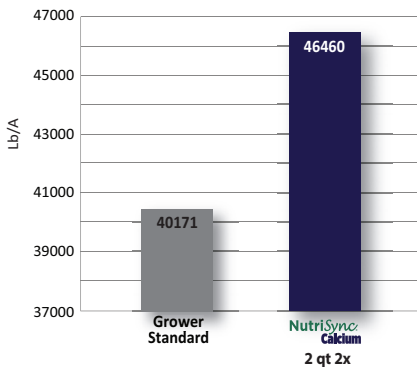
NutriSync MicroPak Orange Trials Average Pound Solids Per Acre



Source: 2015-16, Winter Haven, FL. Florida Ag Research,
Trial Sponsored by CHBio / CPB1502

NutriSync Calcium 2015 Tomato Supplements

Marketable Yield 2 Picks



Source: Loveland Tech Services

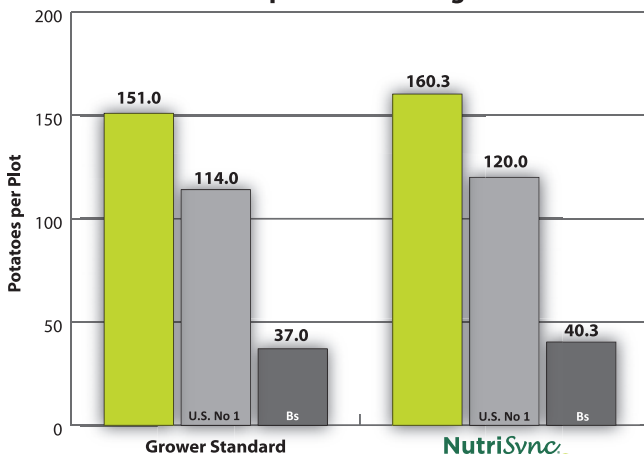


Grower Standard

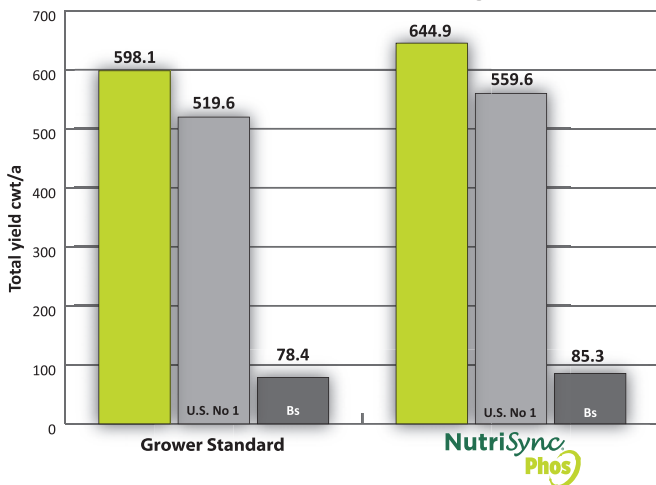


NutriSync 
10 oz applied 5x

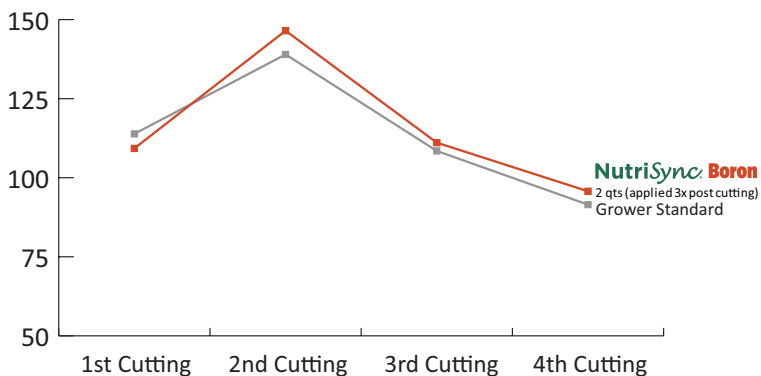
Potatoes per Plot - Michigan



Total Yield - Potatoes, Michigan

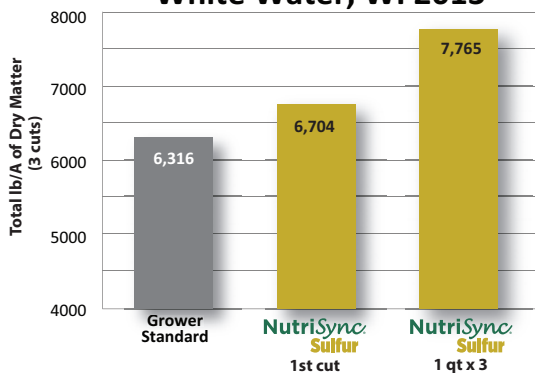


NutriSync Boron on Alfalfa Harvested Tons and Relative Feed Value



Source: Nutrien Ag Solutions; McCook, NE.

Foliar Alfalfa Nutrition White Water, WI 2013



Applications: 1 greenup; 2 after 1st cut; 3 after 2nd cut

Source: CP Bio, 2013.

Other Recommended Products



LI 700® is a non-ionic penetrating surfactant that reduces off-target spray drift and reduces spray water pH. Unique formulation technology and quality ingredients separate LI 700 from the imitators.



HI-WETT® is a blend of organosilicone and other organic fluids formulated to not only give super-spreading properties on plant foliage, but also to improve the retention and deposition of spray droplets on all plant surfaces.



WIDESPREAD® MAX is a premium organosilicone adjuvant designed to reduce the surface tension of the spray solution in order to maximize pesticide and nutrient spray coverage and efficacy.



Contact Your Nutrien Ag Solutions Retailer

Loveland Products, Inc.

3005 Rocky Mountain Ave.

Loveland, CO 80538

(970) 685-3300

www.lovelandproducts.com



For more information on NUTRISYNC products, please visit www.lovelandproducts.com or contact your local Loveland Products retail distributor. ALWAYS READ AND FOLLOW ALL LABEL DIRECTIONS. Check state registration. BOROSOL, NUTRISYNC, and TASK FORCE are registered trademarks of Loveland Products, Inc.
8016_E1418